

Für Mensch & Umwelt

Umwelt
Bundesamt

KomPass 
Kompetenzzentrum
Klimafolgen und Anpassung

EU4Climate

National Adaptation Strategies and Plans: The case of Germany

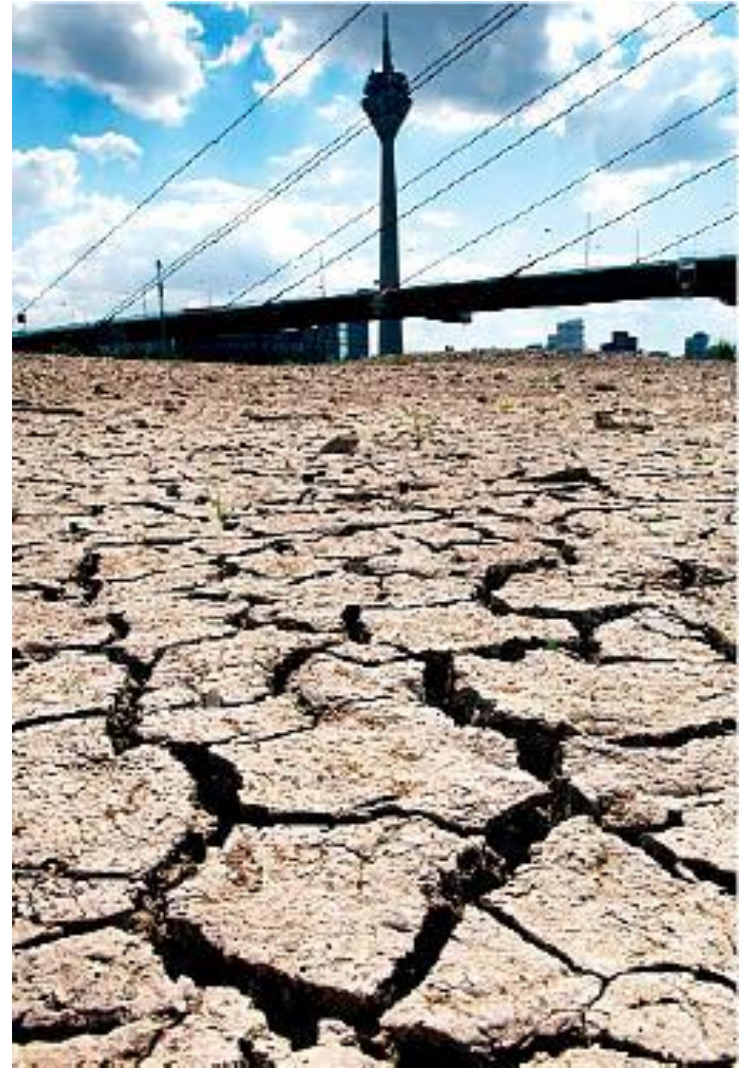
process – principles - projects

Clemens Haße

Section KomPass - Climate Impacts and Adaptation

German Environment Agency

Extreme events gave momentum



National Adaptation in Germany

Process

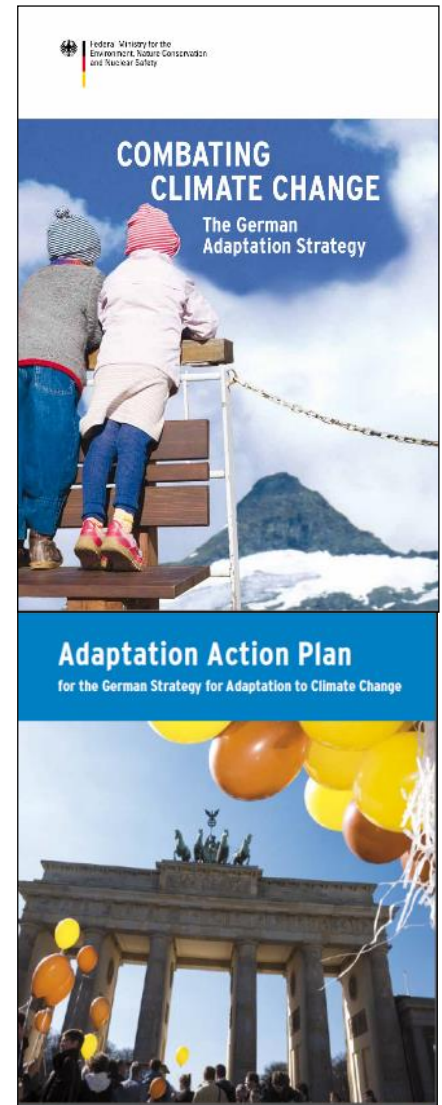
- National Adaptation Strategy (NAS) 2008
- First Adaptation Plan in 2011
- Progress report 2015, incl. Second Action Plan
- Progress report 2020, incl. Third Action Plan

Setup

- Steering group with all relevant Ministries
- Lead-managed by Ministry of Environment

Key Elements of the NAS:

- Providing knowledge, enabling
- National policy framework
- Direct federal responsibility
- International responsibility



National Adaptation in Germany

A broad field of society, environment and economy are considered in the German strategy

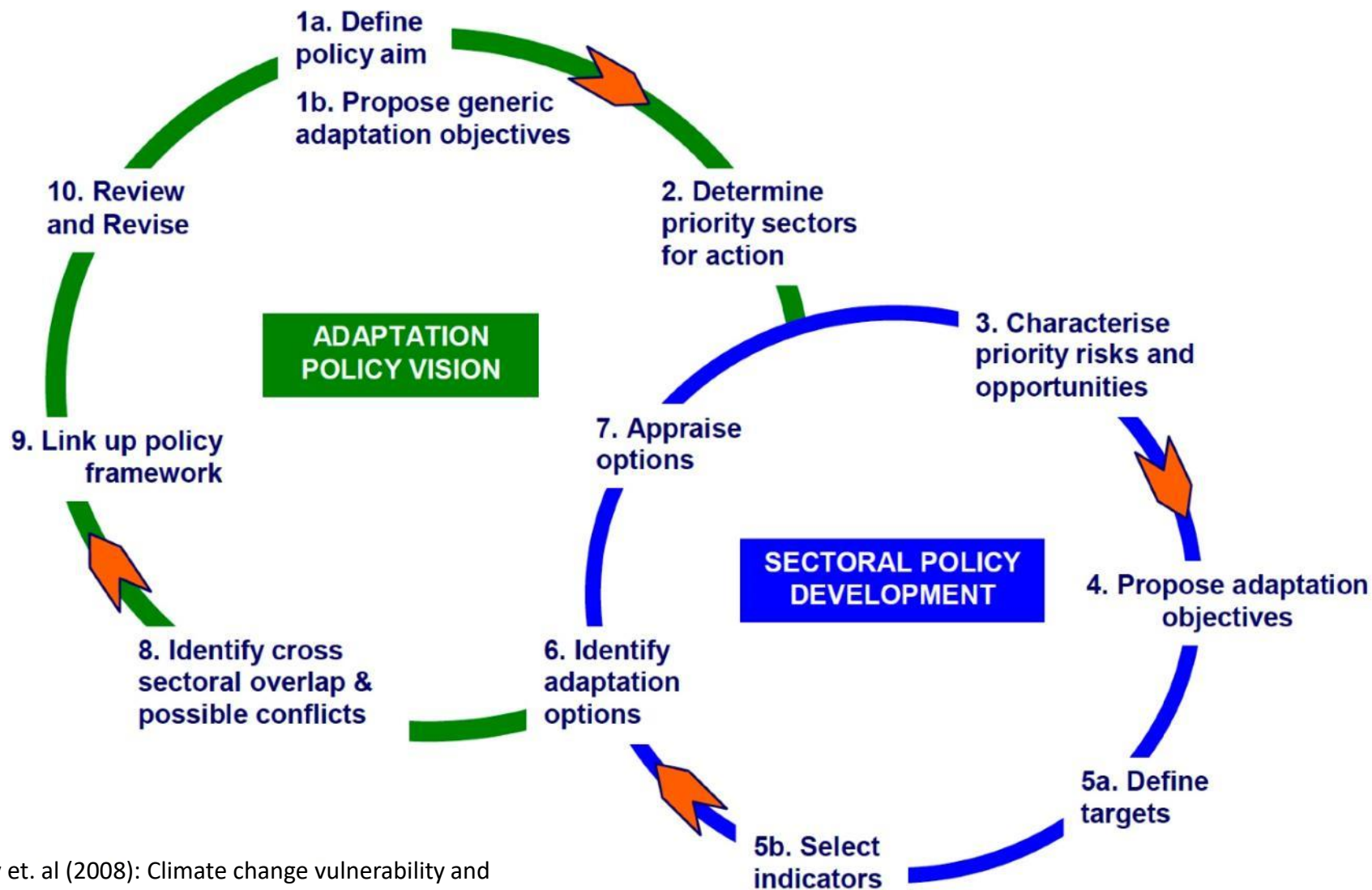
- **AGRICULTURE, FORESTRY AND FISHERIES**
- **WATER MANAGEMENT/ FLOOD PROTECTION**
- **ENERGY**
- **BIODIVERSITY**
- **SOIL**
- **PUBLIC HEALTH**

- **TRANSPORT, INFRASTRUCTURE**
- **TOURISM**
- **INDUSTRY**
- **COMMERCE**
- **FINANCE**

SPATIAL PLANNING AND URBAN LAND USE PLANNING AS WELL AS CIVIL PROTECTION ARE IDENTIFIED TO BE RELEVANT CROSS CUTTING ISSUES

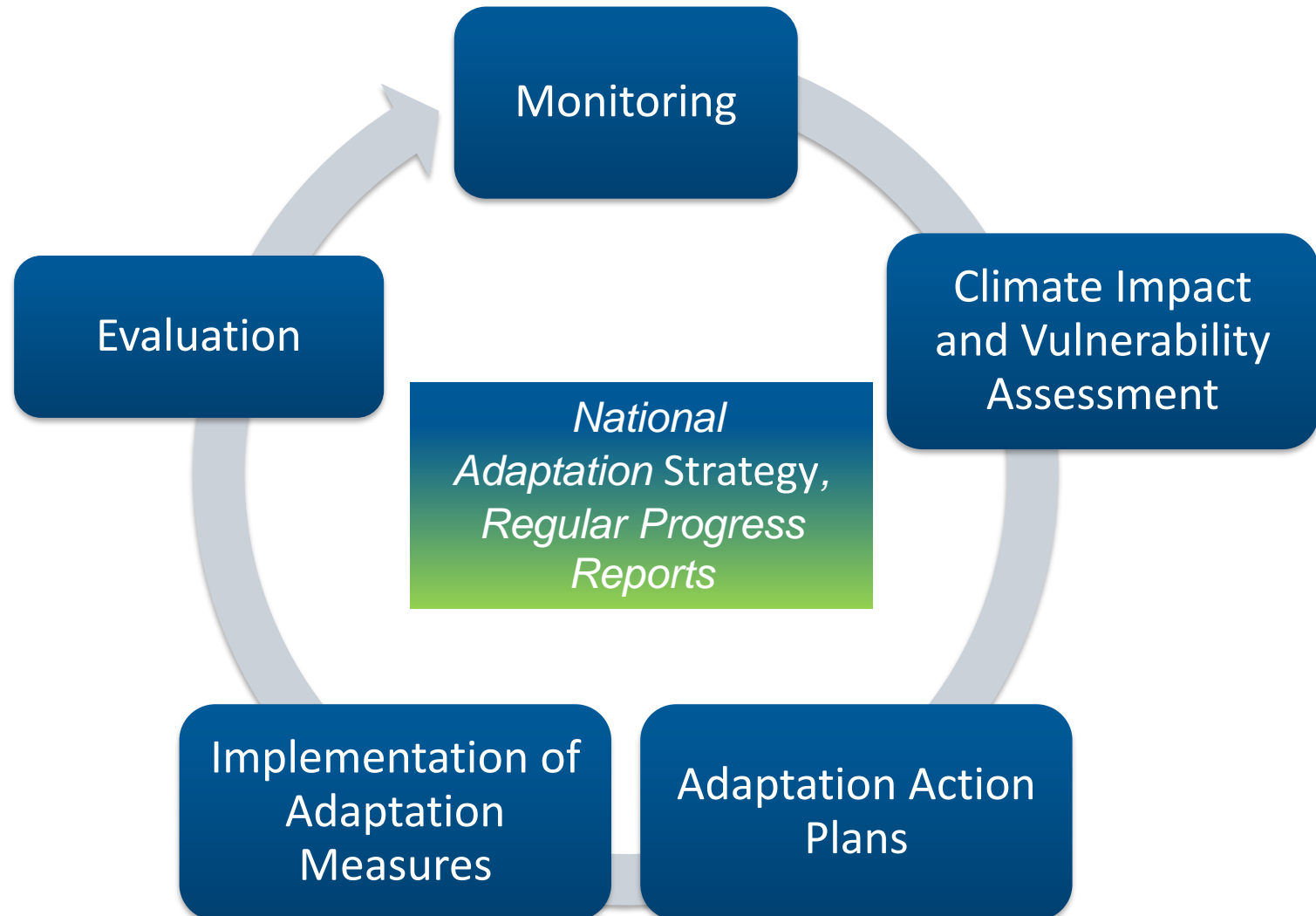


CONCEPT OF ADAPTATION AS POLICY CYCLE



Harley et. al (2008): Climate change vulnerability and adaptation indicators. ETC/ ACC Technical Paper,

NAS policy cycle, regular repeated



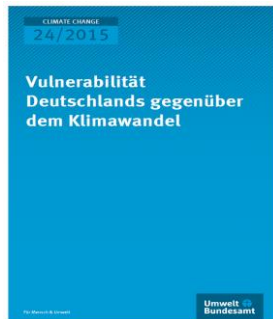
National Adaptation in Germany



2015 Monitoring Report

Based on existing data

- How does climate change **already affect** natural and socio-economic systems?
- Which adaptation measures are **already** taken?



2015 Vulnerability Assessment

Based on climate and socio-economic scenarios

- How will climate change affect us **in the future?**
- Methodology for a new cross-sectoral, nation-wide standardized vulnerability assessment



2015 Progress Report 2015 and Adaptation Action Plan II

Evaluation and Implementation

- On this basis, objectives are formulated and adaptation measures are developed and implemented

Monitoring Report

- ▶ Nationwide overview on key impacts and activities
- ▶ indicators for all spheres of activity (nation-wide; harmonised)
- ▶ Design of a documentation system and organisational structure suitable for regular updates of the report

English Summary of Methodology:

<https://www.umweltbundesamt.de/en/publikationen/evaluation-of-the-german-strategy-for-adaption-to>





Vulnerability Assessment: Network Vulnerability

- Consists of **16 federal agencies** from **9 ministries**,
- Supported by a **scientific team**
- Analysis 2011-2015: **patterns of vulnerability in Germany** based on existing knowledge from regional and sectoral vulnerability assessments,
- Finalized a **new, consistent vulnerability assessment** for all of Germany in regard to all 15 sectors of the NAS

English summary:

https://www.umweltbundesamt.de/sites/default/files/medien/378/publikationen/climate_change_24_2015_summary_vulnerabilitaet_deutschlands_gegenueber_dem_klimawandel_2.pdf

Animation: [HTTPS://YOUTU.BE/NMOW6I67NKY](https://youtu.be/NMOW6I67NKY)

Climate Change Vulnerability in Germany

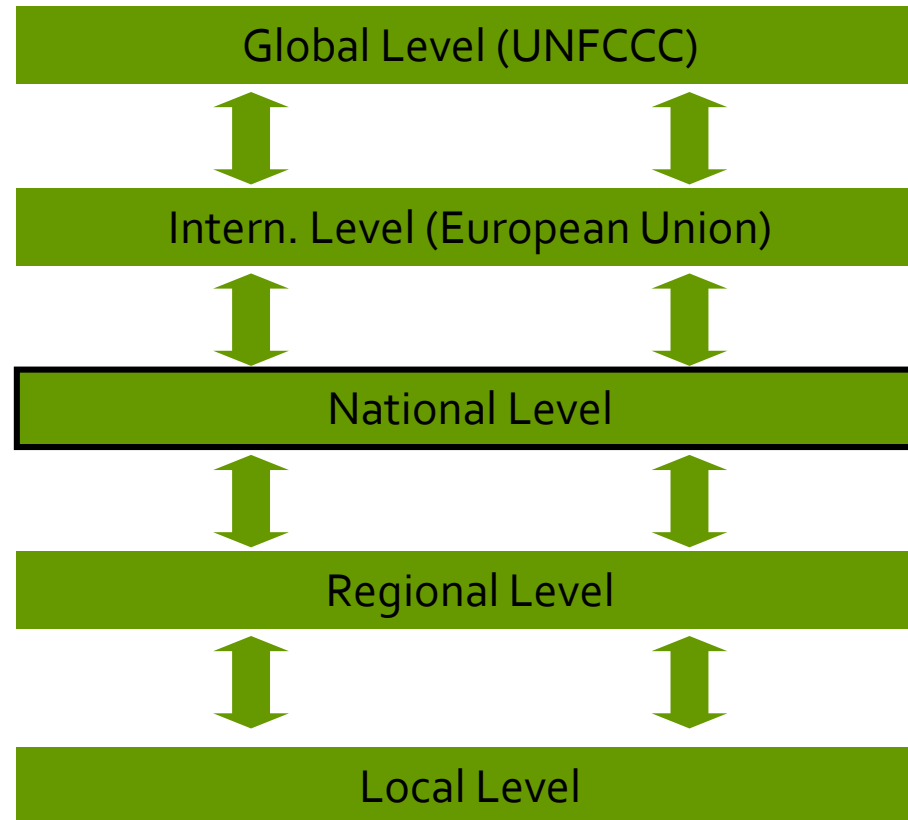
- Increasing impacts / damages by **heat waves**
 - Damages (housing, infrastructure) through **flooding**, extreme precipitation events, flash floods
 - Negative impacts for **use of water** (e. g. agriculture)
 - Coastal damages through **sea level rise** and storm surges
 - Impacts on **ecosystems** and habitats
- Animation: [HTTPS://YOUTU.BE/NMOW6I67NKY](https://youtu.be/NMOW6I67NKY)
- English Summary [Link](#)



Climate change adaptation measures

	Economic mechanisms	Informal mechanisms	Organisational development	Formal mechanisms
Character	Pricebased instruments	Self-commitment of actors reached by information, participation, cooperation	Long-term inclusion of actors in decision and implementation processes by an institutionalised process	Binding legal regulation
Example	Funding of research programmes and of implementation projects on CC adaptation	German Climate Preparedness Portal (KliVO)	KomPass (established in 2006); mandated formally by the Interministerial Working Group in 2008	Amendment to provisions of the Federal Building Code or EU Flood Directive
Objectives	Proactive management of individual adaptation options	Rethink in policy processes and change to adaptive policy cycles	Mainstreaming of CC adaptation into ongoing implementation processes	Legally binding commitment by institutionalised implementation

Think local



Online Tool: “Klimalotse”

**online guide for developing and implementing
adaptation strategies**

Targeted at local decision makers, e.g. in
municipalities or regional administration

Based on the learning cycle



umweltbundesamt.de/klimalotse



Database: “Tatenbank”

implemented adaptation measures

Examples of good practice

main target groups:

- municipalities, regional administrations
- companies for public services
- non-governmental institutions

aims:

- promoting networks between actors
- learning from realized projects
- source for identifying good practice

umweltbundesamt.de/tatenbank



Example: National Adaptation Contest - “Blauer Kompass” 2018

111 applications in three categories:

1. Private and public enterprises
2. Research and Education
3. NGOs + non-government organizations

15 projects nominated for the award (5 per category)

Online Voting on best project as a PR strategy – highly successful: **12.600 votes** counted, most visited website of the German Environment Agency for the time of the voting!

End of May: Expert jury selected one winner per category

22 June: Award Ceremony with the German Environment Minister

Outlook: held contest every two years, strive for further growth and public attention to local best practice adaptation projects



Participation and Dialogue improved Adaptation process

Stakeholder-Dialogues → Raised awareness on national institutions and their products, ensured stakeholder participation in development of national actions

Regional Conferences organized by German Federal States and co-financed by national government → raised awareness in municipalities and regional media

Cooperation Markets → local cooperation between companies, public institutions and non-profit organizations

Online consultation of NAS progress report and 2nd adaptation action plan (Jun/Jul 2015) improved the text and acceptance





Lessons learned

Future is and will be uncertain

- > iterative policy process

Separate policy vs. mainstreaming

- > broad acceptance, trusted networks

Support decision-making

- > provide information, data and tools

Adaptation is regional & local

- > strengthen vertical integration

Successful local adaptation is tied on existing societal networks and initiatives

Clemens Haße

German Environment Agency (Umweltbundesamt)

Section KomPass - Climate Impacts and Adaptation

Wörlitzer Platz 1

06844 Dessau-Roßlau

Germany

tel: +49 (0)340 2103 2216

fax: +49 (0)340 2014 2216

clemens.hasse@uba.de

