

# Experiences from mainstreaming activities in the Waste sector

Case study: Republic of Moldova

Reka Soos – International Consultant (Romania)

October 2020



# Content

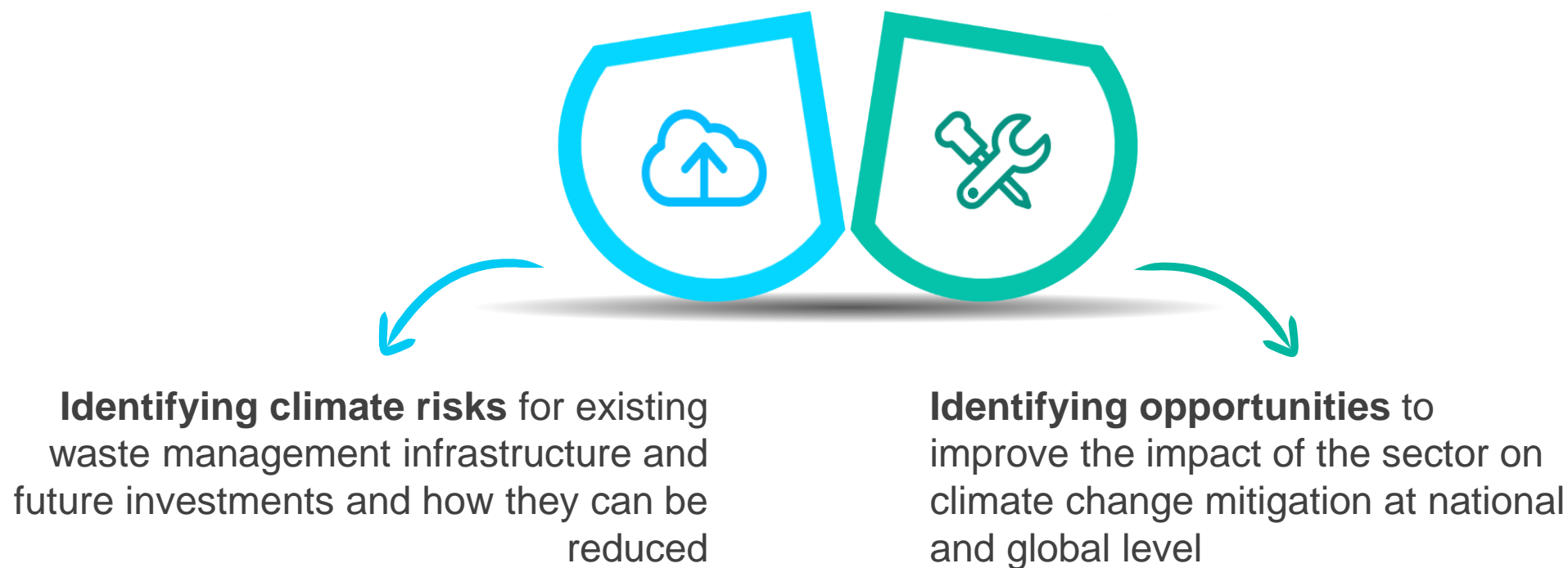
- Integrating Climate Change Aspects into Waste Management Sector Policies - Republic of Moldova
- Findings and recommendations for mainstreaming climate change

# Integrating Climate Change Aspects into Waste Management Sector Policies

**Purpose of the project and activities carried out**

# Integrating Climate Change Aspects into Waste Management Sector Policies

Purpose of the project



# Activities carried out

02

**Consultation of stakeholders** to identify relevant legislation, programs, policies and strategies for integrating climate change issues

04

**Identify aspects of waste management policy** that contradict or do not align with climate change policy

06

**Consultation of the results** of the analysis conducted with stakeholders in two Consultation Workshops



01

**Analysis of international and national climate change policies and legislation**

03

**Assessment of documents** in the waste sector to identify whether climate risks have been taken into account in the development of the waste sector and also whether sufficient potential in the sector to contribute to the reduction of GHG has been considered

05

**Propose recommendations** for mainstreaming climate change aspects in the national policies and legislation

# Findings and recommendations for mainstreaming climate change

# Findings

## Results of the analysis

**A series of disparities have been identified mainly in:**

- Waste Law 209
- National Strategy for Waste Magement
- Packaging waste regulations
- Electronic waste regulations
- National Strategy for Rural and Agriculture development
- Green Economy Program
- Water and Sanitation National Strategy





# GHG mitigation at the landfills



# GHG mitigation at the landfills

## Recommendations for mainstreaming climate change

### **Standards of construction and closure of landfills**

- Landfill Waste Disposal Regulation
- Construction Regulations on Waste Storage

### **Waste storage regime**

- National List of Accepted Waste for each landfill class

# GHG mitigation thorough treatment of biodegradable waste



# GHG mitigation thorough treatment of biodegradable waste

## Recommendations for mainstreaming climate change

- **Treatment options** for the biodegradable waste
- **Waste oil treatment** options
- **Objectives and targets** for the reduction of the amount of biodegradable waste landfilled
- **Update of the biodegradable waste legal definition** in order to introduce new waste types like sludge resulted from wastewater treatment, street waste, biowaste from markets etc.





GHG mitigation thorough recycling

# GHG mitigation thorough recycling

## Recommendations for mainstreaming climate change

- **Extended Producers Responsibility Scheme**
- **Introduction of a financial support mechanism** for environmental protection projects and programs
- **Waste Management Strategy Action Plan**
- **Waste recycling targets**
- **Deposit refund system**
- **E-waste tax**



# Tariff setting



# Tariff setting

## Recommendations for mainstreaming climate change

- **Defining the calculation methodology** and establishing the amount of the tariff
- **Tariff setting policy**
- Introduction of **economic instruments** and **tariff differentiation**
- **Reduced rate** for separation of recyclables at source
- **Landfill tax**
- **Reduced rate** for selectively collected recyclables and biodegradables

# GHG mitigation through Circular Economy



# GHG mitigation thorough Circular Economy

## Recommendations for mainstreaming climate change

- **Tax on hardly recyclable materials** or non-recyclable products
- **“Pay as You Throw” Scheme (PAYT)**
- **Objectives and targets for use in agriculture of organic compost** resulted from biowaste treatment
- **Landfill tax**
- **“End of Waste”**





# Risk analysis and adaptation measures



# Risk analysis and adaptation measures

Risk analysis and adaptation measures Recommendations for mainstreaming climate change

- **Conduct a study** to identify the vulnerability of existing and planned infrastructure for waste management
- **Update the Waste Storage Regulation and other relevant policies** in a manner that considers the results of the study, both for construction and for operation phase



GHG reduction thorough  
eliminating anaerobic  
treatment of wastewater





# GHG reduction thorough eliminating anaerobic treatment of wastewater

## Recommendations for mainstreaming climate change

- Update the **Water Supply and Sanitation Strategy**
- Develop a **National Sludge Management Strategy**
- Develop **Sludge Management Plans** at wastewater treatment plants
- **Monitoring and calculation of GHG** resulted from wastewater and sludge treatment

# Thank you

Reka Soos – International Consultant (Romania)

October 2020